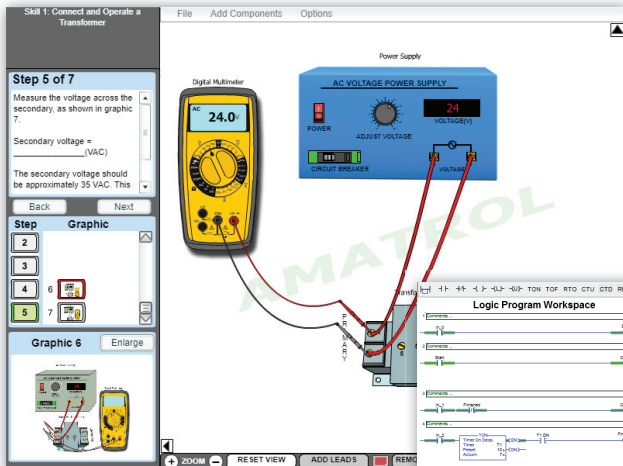
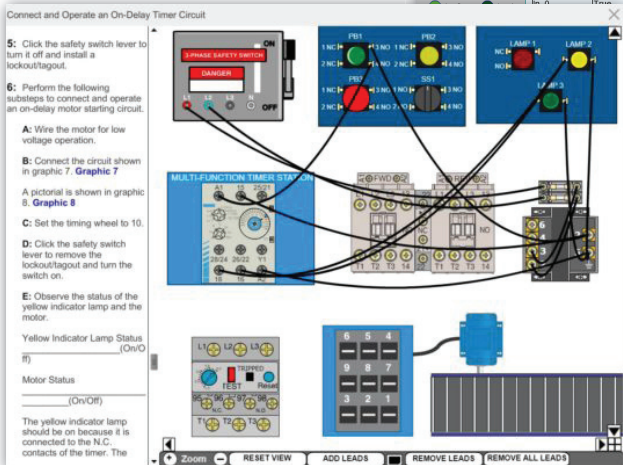


Web-Enabled Virtual Trainers

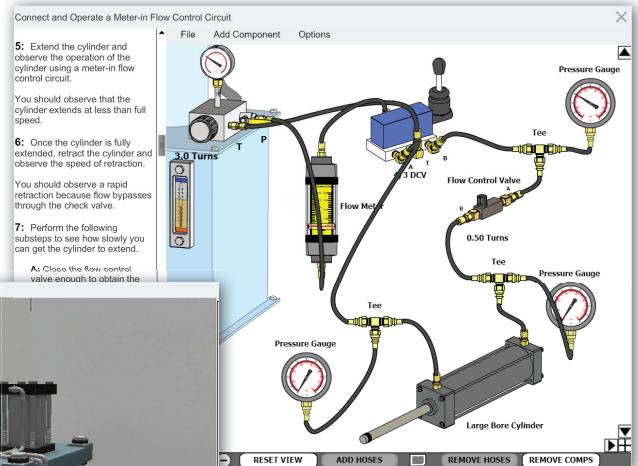
Build Skills With Online Access



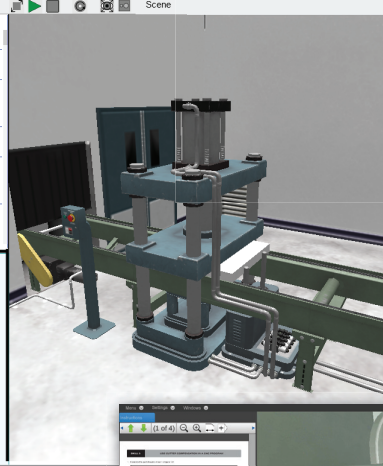
AC/DC Electrical



Electrical Motor Control



Hydraulics



Programmable Logic Controller (3D)



CNC Machine (3D)

See Additional Virtual Trainers On Back

Virtual Trainer Technologies

- AC/DC Electrical
- Electrical Control
- Motor Control
- Oscilloscope
- Programmable Logic Controller (3D)
- Measurement
- Machine Tools
- Manual Torque Wrenches
- Split-Flange Couplings
- Electric Torque Wrenches
- Mechanical
- Pneumatics
- Hydraulics
- CNC Machine (3D)

Amatrol's virtual trainers allow learners to practice hands-on skills via eLearning. These simulations replicate Amatrol's physical training systems in such great detail that learners can build essential skills even when they don't have access to actual equipment. This provides much needed flexibility in today's fast-paced learning environment.

Existing in an open workspace, these virtual training systems allow students the freedom to make any connections or take any steps they choose, and do not force them along a predetermined series of steps. This provides a true learning experience and allows students to learn from their both their successes and errors. The skill level students develop with these virtual trainers can greatly reduce students' hands-on time with equipment to complete their skill mastery.



Practice Hands-On Skills Via eLearning

Amatrol's virtual trainers can be used as stand-alone learning tools or as part of a complete curriculum. All virtual trainers come with an interactive multimedia curriculum to teach concepts and exercises to guide their virtual skill experience. Amatrol offers many types of virtual trainers to support a wide range of CTE courses.

| VIRTUAL ELECTRICAL TRAINER | COURSEWARE |
|---|------------|
| Electrical Motor Control | 17401 |
| Electrical Control | B703 |
| AC/DC Electrical | B227 |
| VIRTUAL ELECTRONICS TRAINER | COURSEWARE |
| Programmable Logic Controller (3D) | 40087 |
| Oscilloscope | 11128 |
| VIRTUAL FLUID POWER TRAINER | COURSEWARE |
| Hydraulics | B831 |
| Pneumatics | B780 |
| VIRTUAL MACHINING TRAINER | COURSEWARE |
| CNC Machine (3D) | B701 |
| VIRTUAL MANUFACTURING PROCESSES TRAINER | COURSEWARE |
| Manual Torque Wrenches | 19030 |
| Split Flange Couplings | 19306 |
| Electric Torque Wrenches | 19042 |
| VIRTUAL MECHANICAL TRAINER | COURSEWARE |
| Mechanical | B728 |
| VIRTUAL QUALITY ASSURANCE TRAINER | COURSEWARE |
| Measurement | 19017 |

